

# London sights and places with the use of IT

Gabriela Petříková<sup>1</sup>

e-mail: [gabriela.petrikova@gyby.cz](mailto:gabriela.petrikova@gyby.cz)

<sup>1</sup>Klasické a španělské gymnázium Brno-Bystrc, příspěvková organizace, Vejestova 2, 635 00 Brno

## Klíčová slova

London, London sights, Google Earth, trip to London, sightseeing and travelling in London, the Internet activities

## I Study London sights with the use of IT

### I.1 Basic information

Using the Internet, especially map applications, is ideal for the study of geographical topics in languages. This not only helps to get the knowledge of sights and other places of interest, but also helps to practise and adopt their spatial distribution. The following activities are based on the use of two applications: Google Earth and Sygic Travel.




**Google Earth** is a virtual globe, map and geographical information program. It displays satellite images of varying resolution of the Earth's surface, allowing users to see things like cities and houses looking perpendicularly down or at an oblique angle. [1]



**Sygic Travel**, formerly known as Tripomatic, is a trip and vacation planner, allowing users to plan their trip itinerary and travel with ease, to find the best sights, tours, hotels and more. [2]

### I.2 A Worksheet THE LONDON SIGHTS

I

Work in pairs. Open the Google Earth application. Go to London. Check if the 3D buildings layer is on. Try to identify the following London sights. Fill in their names and find more about them on the Internet:

Pictures	Name + sight specification	Basic information
		
		
		

Pictures	Name + sight specification	Basic information
		
		
		
		
		

What are the following places and modern buildings:

**the Gherkin:**

**the Millennium Dome:**

**Canary Wharf:**

**the Shard:**

**the London Eye:**

Now check / compare your results with another pair.

2

Try to match the following places to the numbers showing their position in the map:

	Number in the map		Number in the map
Westminster Palace		Piccadilly Circus	
Westminster Abbey		St Paul's Cathedral	
Buckingham Palace		The Shard	
London Eye		The Tower	
Trafalgar Square		Royal Observatory	
Canary Wharf		The Tower Bridge	
Hyde Park			

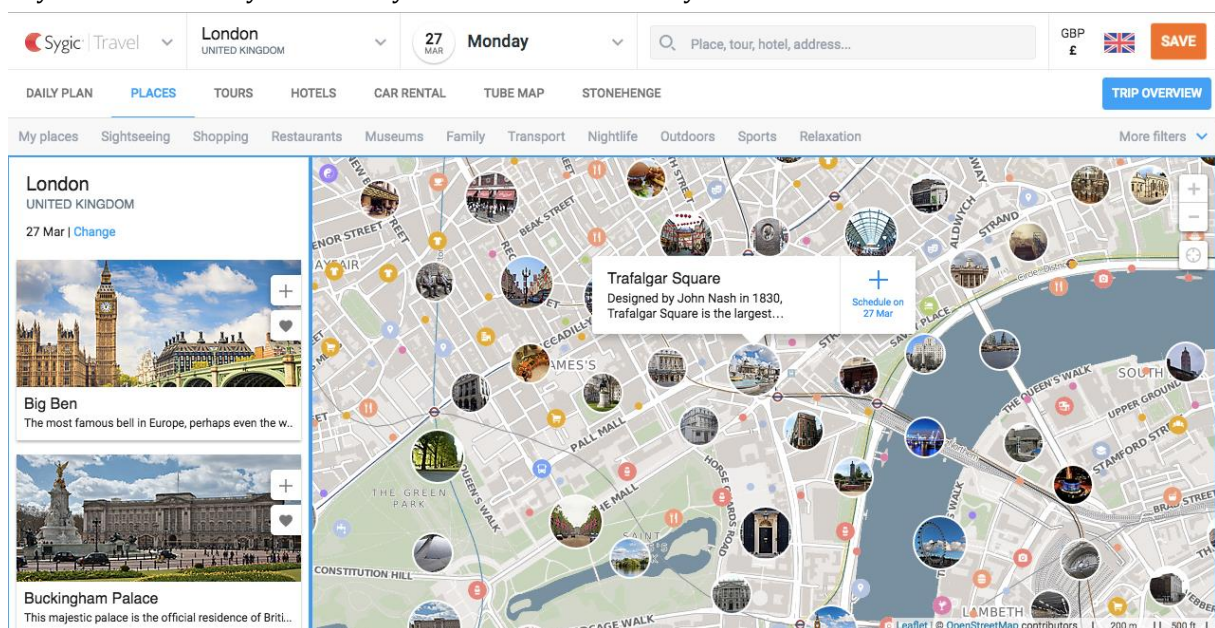


Picture 1 – Location of London sights and places [3]

Check the results in Google Earth.

3

Plan a 3-day visit to London. Go to <https://travel.sygic.com>. Work in pairs. Create an account to be able to save your new trip to London. Choose English language. Choose the sights and places to see every single day. Create and save your itinerary. Share and discuss with your classmates.



Picture 2 – Travel Sygic application offering various places of interest in London [4]

## Citace

- [1] *Google Earth* [online]. 2017 [cit. 2017-03-28]. Wikipedia. Dostupné z WWW: <[https://en.wikipedia.org/wiki/Google\\_Earth](https://en.wikipedia.org/wiki/Google_Earth)>.
- [2] *Travel Sygic* [online]. 2017 [cit. 2017-03-28]. Sygic Travel. Dostupné z WWW: <<https://travel.sygic.com/en#planner>>.
- [3] *Openstreet Map* [online]. 2017 [cit. 2017-03-28]. Openstreet Map. Dostupné z WWW: <<https://openstreetmap.cz/#map=13/51.4984/-0.0872&layers=x>>.
- [4] *Travel Sygic* [online]. 2017 [cit. 2017-03-28]. Sygic Travel. Dostupné z WWW: <<https://travel.sygic.com>>.
- [5] Zdroje obrázků v úkolu 1:  
*Westminster Palace* [online]. 2017 [cit. 2017-03-28]. Dostupné z WWW: <[http://uktravel-information.com/uploads/images/attraction\\_images/238/xlarge/00012\\_2.jpg](http://uktravel-information.com/uploads/images/attraction_images/238/xlarge/00012_2.jpg)>  
*Trafalgar Square* [online]. 2017 [cit. 2017-03-28]. Wikipedia. Dostupné z WWW: <[https://upload.wikimedia.org/wikipedia/commons/thumb/a/a6/Trafalgar\\_Square%2C\\_London\\_2\\_-\\_Jun\\_2009.jpg/1024px-Trafalgar\\_Square%2C\\_London\\_2\\_-\\_Jun\\_2009.jpg](https://upload.wikimedia.org/wikipedia/commons/thumb/a/a6/Trafalgar_Square%2C_London_2_-_Jun_2009.jpg/1024px-Trafalgar_Square%2C_London_2_-_Jun_2009.jpg)>  
*Buckingham Palace* [online]. 2017 [cit. 2017-03-28]. Wikipedia. Dostupné z WWW: <[https://upload.wikimedia.org/wikipedia/commons/thumb/b/b4/Buckingham\\_Palace%2C\\_London\\_-\\_April\\_2009.jpg/300px-Buckingham\\_Palace%2C\\_London\\_-\\_April\\_2009.jpg](https://upload.wikimedia.org/wikipedia/commons/thumb/b/b4/Buckingham_Palace%2C_London_-_April_2009.jpg/300px-Buckingham_Palace%2C_London_-_April_2009.jpg)>  
*Piccadilly Circus* [online]. 2017 [cit. 2017-03-28]. Dostupné z WWW: <<https://media1.britannica.com/eb-media/39/99939-004-E4E8935E.jpg>>  
*Westminster Abbey* [online]. 2017 [cit. 2017-03-28]. Wikipedia. Dostupné z WWW: <<https://upload.wikimedia.org/wikipedia/commons/thumb/4/47/Westminster-Abbey.JPG/220px-Westminster-Abbey.JPG>>  
*The Tower of London* [online]. 2017 [cit. 2017-03-28]. Wikipedia. Dostupné z WWW: <[https://upload.wikimedia.org/wikipedia/commons/b/b6/Tower\\_of\\_london\\_from\\_swissre.jpg](https://upload.wikimedia.org/wikipedia/commons/b/b6/Tower_of_london_from_swissre.jpg)>  
*St Paul's Cathedral* [online]. 2017 [cit. 2017-03-28]. Wikipedia. Dostupné z WWW: <[https://upload.wikimedia.org/wikipedia/commons/thumb/2/2f/St\\_Paul%27s\\_Cathedral%2C\\_London%2C\\_England\\_-\\_Jan\\_2010\\_edit.jpg/280px-St\\_Paul%27s\\_Cathedral%2C\\_London%2C\\_England\\_-\\_Jan\\_2010\\_edit.jpg](https://upload.wikimedia.org/wikipedia/commons/thumb/2/2f/St_Paul%27s_Cathedral%2C_London%2C_England_-_Jan_2010_edit.jpg/280px-St_Paul%27s_Cathedral%2C_London%2C_England_-_Jan_2010_edit.jpg)>  
*The Royal Observatory* [online]. 2017 [cit. 2017-03-28]. Dostupné z WWW: <<http://www.rmg.co.uk/sites/default/files/styles/slider/public/images/D6849-2.jpg?itok=CNXg6U8p>>